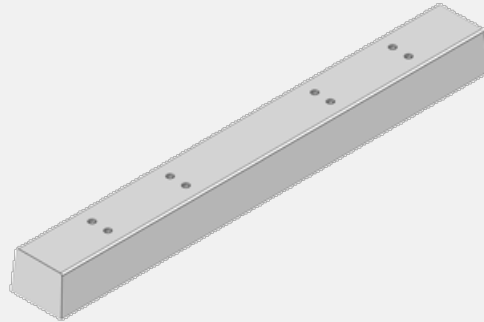


Crossing sleeper VPS PP 13

31 Doloplazy



| Trademark | Dimensions (cm) | | | | | Concrete Class | Volume (m3) | Weight (kg) |
|-----------|-----------------|------|----|------|-----|----------------|-------------|-------------|
| | L | B | H | B_1 | R_2 | | | |
| APP 34-19 | 260 | 30,4 | 22 | 27,5 | 1 | C 50/60-XF1 | 0,1600 | 380 |

Usage:

The concrete sleeper VPS PP 13 is delivered equipped with a welded double base for a running and additional rail of shape 49 E1 with a slope of 1:20; rigid fastening with ŽS4 clamps. Track gauge 1435 mm. The leveling sleeper is intended for the construction of railway crossings and surface paving of tracks (especially sidings) with a bituminous, concrete or unpaved pavement cover. The design of the pavement cover is governed by the SŽDC - Ž11 sample sheets or the construction project.

Speed 120 km / h - speed range 0-2 - weight per axle 18 t (YES), 22.5 t (YES), 25 t (YES)

Speed 160 km / h - speed range 0-3 - axle weight 18 t (YES), 22.5 t (YES), 25 t (YES)

Speed 220 km / h - speed range 0-4 - weight per axle 18 t (YES), 22.5 t (YES), 25 t (YES)

Speed 300 km / h - speed range 0-5 - weight per axle 18 t (YES), 22.5 t (NO), 25 t (NO)