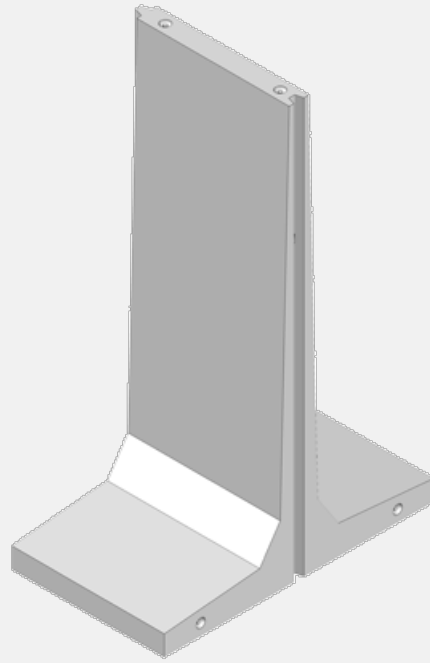


Supporting piece T 300

41 Litice



Trademark	Dimensions (cm)						Concrete Class	Volume (m3)	Weight (kg)
	L	B	H	H_1	H_2	B_1			
IZT 510/19	147	220	300	19,2	36,8	19,8	C 30/37-XF1	1,9379	4750

Usage:

The ŽPSV company offers a comprehensive range of prefabricated support elements in the shape of the letter T, any height between 3.0 and 5.0 m and supplied under the trade name „T support elements“. These are corner wall elements with a base plate. They are intended for building boxes for the storage of silage, wood chips and sawdust, biomass and loose materials (sand, crushed stone, etc.). They can also be used for building separate supports, e.g. for storing wooden logs. The support parts T are equipped with a tongue and groove for mutual interaction. They can also be supplied without tongue and groove. Steel plates can be built into the edges of the walls for possible cooperation between neighboring dealers. The reinforcement of the base plate can be delivered bare on request, and subsequent monolithing can be carried out. The required load-bearing capacity of such a monolithic element must be verified by a separate static assessment.

The supporting parts have built-in DEHA handles in the side and top walls, which are used for handling during production, loading, rotation and storage at the place of installation. Support elements T are usually made of concrete class C 30/37, for environmental impact level XF1, XF4, XA2 according to ČSN EN 206 - 1.